



**Artificial intelligent
ecosystem for
self-management and
sustainable
quality of life in AAL**

Funded under the European Active and Assisted Living
Programme - www.aal-europe.eu

COORDINATOR

University POLITEHNICA of Bucharest
Faculty of Automatic Control and Computers
313, Splaiul Independentei
Bucharest 060042, Romania
Email: info@aimas.cs.pub.ro



www.camiproject.eu

PARTNERS

IT Center for Science and Technology
Bucharest, Romania, Email: info@citst.ro

CNET Svenska AB
Svärdvägen, Sweden, Email: info@cnet.se

Mälardalen University
Mälardalen, Sweden, Email: info@mdh.se

Ecotopias
Risskov, Denmark, Email: info@ecotopias.dk

Aliviate development ApS
Viby, Denmark, Email: info@aliviate.dk

ECLEXYS Sagl
Via dell'Inglese, Switzerland, Email: info@eclexys.com

Shipyard
Warsaw, Poland, Email: stocznia@stocznia.org.pl



ICT for ageing well

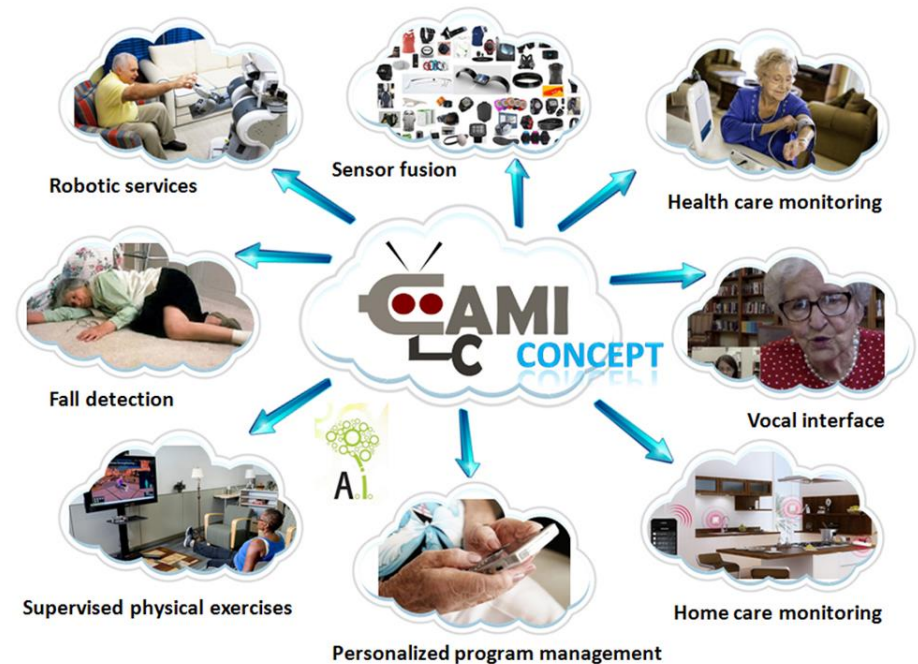
CAMI ECOSYSTEM is a fully integrated solution for Active and Assisted Living, comprising:

- Integrated solution to support elderly needs
- Functionalities:
 - Health data monitoring and sharing
 - Home monitoring
 - Supervised physical exercises
 - Intelligent activity planning and reminding
 - Multi-modal interaction - gesture and voice
 - Robotic services - telepresence or social robot
- Modular and configurable design, which allows selecting the desired CAMI components, depending on user needs
- Artificial intelligence techniques for autonomous management and interaction
- Micro-service based approach, message-passing for inter-service communication and a combination of cloud and local processing for improved flexibility



OBJECTIVE

CAMI develops a framework with an innovative architecture relying from its very core to its higher layers on Artificial Intelligence and allowing an integration of different sensors and home appliances with commercial robotic platforms.



USER INVOLVMENT

Primary, secondary and tertiary users are involved throughout the project, from user requirements, through validation of concepts and functionality to usability tests and field trials. A multinational survey with 105 primary (55-75 years) and 58 secondary (formal and informal) users has identified both the requirements and the acceptance of the users for the CAMI components.